

DMS STORK

GENERAL INFORMATION

Year build: 2013
Class: BUREAU VERITAS, 1 lfc 3/3 Hull Tug,
Unrestricted navigation, AUT-UMS
Flag: St. Vincent & The Grenadines

MAIN DIMENSIONS

Length o.a: 35.25 m
Beam o.a: 11,60 m
Depth: 5,25 m
Draft max. amidship: 3.64 m
Tonnage: 600 GT / 180 NT

TANK CAPACITIES

Fuel oil: 374.4 m³
Fresh water: 42,0 m³
Hydr.oil: 3,7 m³
Lub oil: 4,4 m³
Bilge water: 2,2 m³
Dirty oil: 4,4 m³
Sewage: 23,6m³
Gear oil: 2.2 m³

PERFORMANCES (TRIALS)

Bollard pull: 70 tons
Speed: 11.6 knots

PROPULSION SYSTEM

Main engines: 2x Caterpillar 3516 B TA
Total power: 3840 kW (5150 hp) at 1600 rpm
Propulsion: 2x fixed pitch propellers in nozzles
Diameter: 2700 mm
Gearbox: Reintjes WAF 873 / 7.455 : 1
Bowthruster: 295 kW (400hp), hydraulically driven



AUXILIARY EQUIPMENT

Auxilliary engines: 2x Caterpillar C-9 TA
Generator: Leroy Somer, LSAM 46.2 M5
Output: 2x 150 kVA, 50 Hz, 230/400 V
Hydraulic set: Caterpillar C18 TA, 500 kW at 2100 RPM
Fuel seperator: Alfa Laval type MAB 104, 1950 ltr/hr
Internal FIFI System: CO2 in the engine room
Transfer pumps: Fuel 50 m³/ hr at 4.8 bar
Fresh water 50 m³/ hr at 4.8 bar



DMS STORK

DECK LAY-OUT

Anchor: 2x 375 kg Pool (H.H.P.)

Deck Crane: Heila 170-4S-L, remote controlled,
Capacity: 18,2 tons at 8,03m
7,9 tons at 15,93m

Anchor winch: Ridderinkhof, CAW-H-152,
capacity 5 tons a 10m/min.

Ah towing winch: Ridderinkhof AHW-H-1000,
capacity: P= 50 tons at 10m/min
P=100 tons at 5m/min.
B=100 tons

Tugger winch: Brevini, 8 tons at 4,5m/min.

Towing pins: Karm Fork, 160 tons SWL

FIFI Pump: 1200 m³/hr

FIFI Monitor: 2x monitor Albach EL 377

Stern roller: 5000 mm x 980 mm, 100 tons SWL

Spark arrestors: Fitteds (external)

ACCOMODATION

Heated and air-conditioned living spaces for 15 persons, consisting three single crew cabins and six double crew cabins, a gallery, a mess room and sanitary facilities.

NAUTICAL AND COMMUNICATION EQUIPMENT

All systems and equipment according to GMDSS Area 3.

searchlights: 2x 1000W

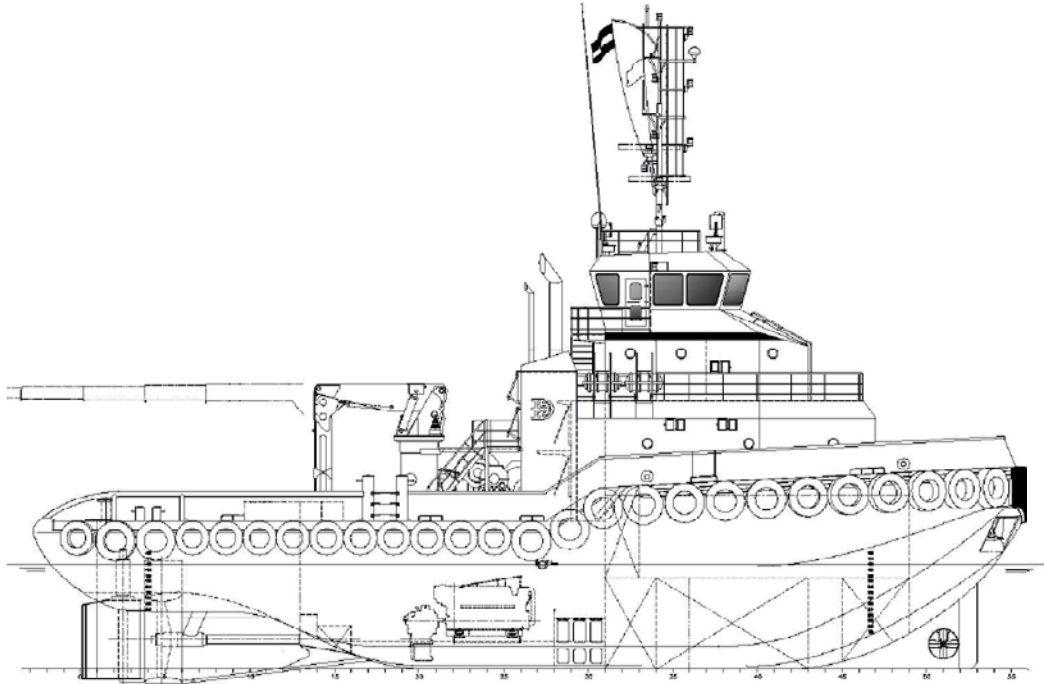
Navigation equipment: Magnetic compass, gyro compass, 2x radar, GPS, autopilot, echo sounder, speedlog, watch alarm, chart plotter.

Communication: 3x VHF, 2x handheld VHF, Navtex, Inmarsat-C, SSB, Iridium, intercom, PA-system, LRIT, AIS, SSAS.

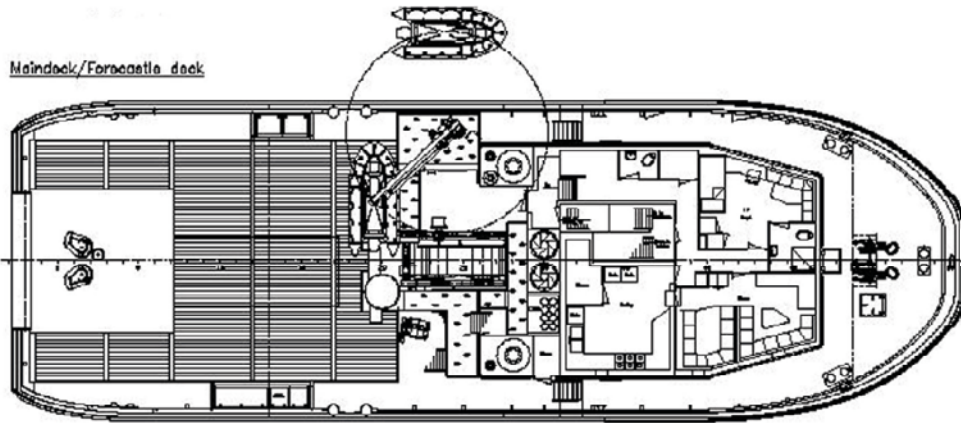
Additional equipment: TV antenna satellite system.



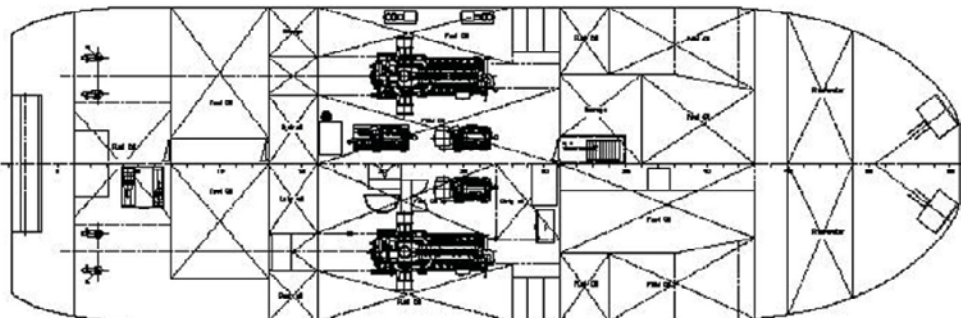
DMS STORK



Maindeck/Forecastle deck



Below maindeck



Details of the equipment offered by DMC is done in good faith and believed to be correct but cannot be guaranteed.