

ANTEOS

This is an Open Sea Anchor Handling & Towing Vessel built for worldwide operations. Built in China in 2000, she was and extensively upgraded in 2008 to suit her current duties, including replacement of both Main Engines in 2010 and major upgrade to the accommodation and living spaces and services. She now operates mainly as a Towing Vessel for Cable Laying units on a worldwide basis and, in addition, offers supply and auxiliary services on the various projects that she is involved in. She holds an extensive track record on a variety of offshore projects and is being constantly kept up to date with new equipment and careful maintenance to ensure zero downtime and highest possible performance on her employments.

MAIN PARTICULARS

Length: 37.0 M
Breadth: 11.4 M
Deadweight: 364.5 MT
Bollard pull: 45 MT
Accommodation: 14 Persons
Flag: German
Classification: American bureau of shipping

GENERAL

Classification: ABS X A1, Towing Vessel (E), XAMS Built.....China, 2000

MAIN PARTICULARS

Length Overall: 37.00 m
Breadth Moulded: 11.40 m
Depth Moulded: 4.95 m
Draught (Maximum): 4.35 m
Gross Tonnage: 466
Bollard Pull: 45 MT



ACCOMODATION

Accommodation for 14 persons
2 x single cabins – Captain class (Private WC)
2 x double cabins – Officer class (Shared WC)
2 x four-bunk cabins – Rating class (Comm. WC)
1 x Combined Mess-Day Room

POWER AND PROPULSION

2 x M/E CAT 3512B, each 1,575 BHP (Blt. 2009)
2 x Reintjes WAF772 Reduction Gears
2 x Mikado NiAlBr Props in Kort Nozzles
2 x Rudders on Kort Nozzles (Linked)
1 x Bow Thruster, Ulstein 45-TV, 3.7 Tons
3 x G/E Detroit Diesel 8V-92TA each 300 kW

TANK CAPACITIES

Fuel (MGO): abt. 245 MT
Fresh Water: abt. 80 MT (Production 5 T/D)
Dispersant: abt. 13 m³
Foam: abt. 13 m³

Details of the equipment offered by DMC is done in good faith and believed to be correct but cannot be guaranteed.

ANTEOS

SPEED & CONSUMPTION

Max Speed (Free Running): abt. 13.0 kn

Cons. on Max Speed: abt. 10.5 T/D

Economy Speed: abt. 10.0 kn

Cons. on Economy Speed: abt. 7.0 T/D

Port Consumption: abt. 0.5 T/D

LIFTING APPLIANCES - CRANES

Heated and air-conditioned living spaces for 15 persons, consisting three single crew cabins and six double crew cabins, a gallery, a mess room and sanitary facilities.

MOORING & ANCHORING SYSTEMS

1 x Twin Anchor Windlass & Mooring Winch

2 x Stockless Anchors, each 680 kg

2 x 220m steel stud link Anchor Chain

TOWING EQUIPMENT

1 x Shark Jaw (retractable) - Karm Fork Oy

2 x Towing Pins (retractable) - Karm Fork Oy

2 x Quarter Pins

1 x Twin Drum (side-by side) Towing Winch:

50 MT Pull @ 0~13 m/min

128 MT Brake Holding (1st layer)

2 x 750m Lengths Towing Wire (52mm)

2 x Wire Storage Reels:

6 MT Pull @ 12 m/min

750m / 52mm wire capacity each

1 x Tugger Winch 10 MT Pull @ 14 m/min

1 x Stern Roller 200 MT SWL

Complete Towing Tackle and Fittings

MARPOL

1 x Oily Water Separator in E/R

1 x Vacuum Black Water Collection System

1 x Sewage Treatment Plant (MARPOL Compliant)

2 x 4m Retractable Oil Dispersant Booms

NAVIGATION & COMMUNICATIONS

2 x Radars (X-Band) - JRC

1 x GPS Plotter

1 x Gyroscopic Compass

1 x AIS Unit

2 x DGPS for Navigation

GMDSS Approved Communications Systems

1 x FleetBroadband 250 Sat Phone

LIFE SAVING - FIRE FIGHTING

2 x 15 Person Self Righting Liferrafts

Life Saving Appliances for 15 persons

2 x SART

1 x Free Float EPIRB

Fire Detection & Alarm System

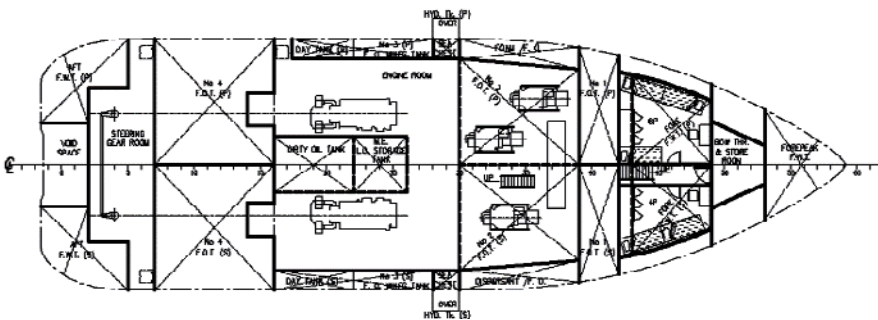
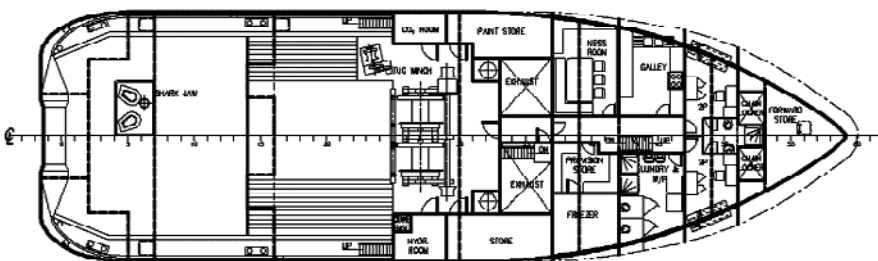
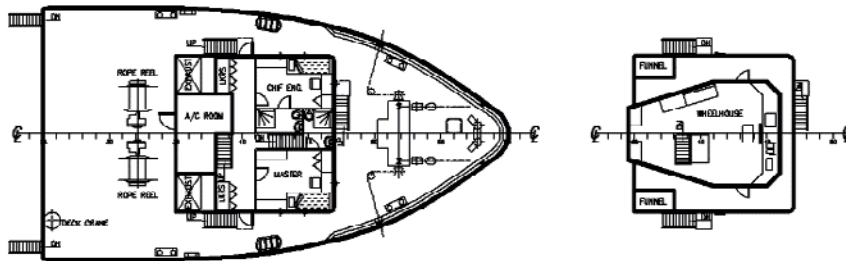
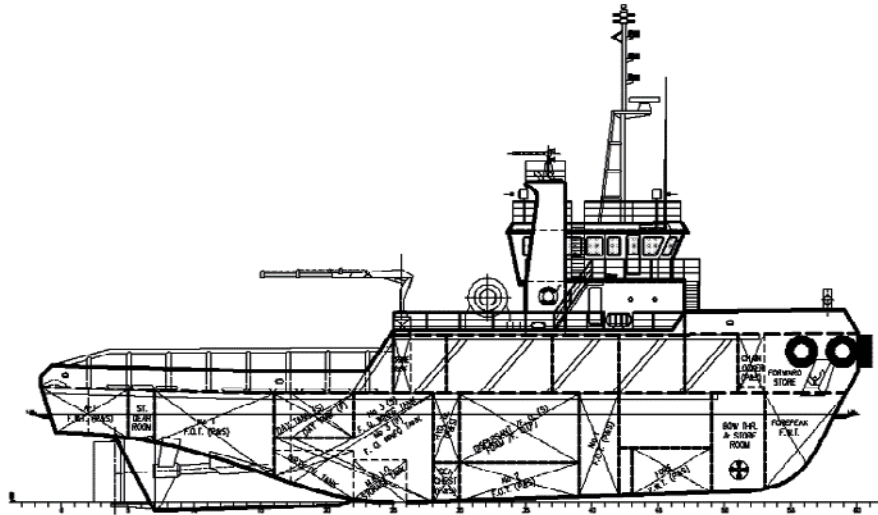
Centralized CO2 Fire Extinguishing System in E/R

2 x Fire Monitors 3,000 lt/min @ 120m Head

1 x Fire Pump 360 m3/h w/ Foam Injection Pump



ANTEOS



Details of the equipment offered by DMC is done in good faith and believed to be correct but cannot be guaranteed.